



Prophylactic cerebrospinal fluid drainage and spinal cord ischemia in thoracic and thoracoabdominal endovascular procedures: a systematic review and meta-analysis

Cheng-Hao Jacky Chen^{1,2,3#}, Henry Jiang^{2,4#}, Vinh Dat David Nguyen^{2,5}

¹Collaborative Research Group (CORE), Sydney, New South Wales, Australia; ²Faculty of Medicine and Health, University of Sydney, Sydney, New South Wales, Australia; ³Department of Anesthesiology and Perioperative Medicine, Medical College of Georgia, Augusta University, Augusta, GA, USA; ⁴Prince of Wales Hospital, Sydney, New South Wales, Australia; ⁵Latrobe Regional Hospital, Traralgon, Victoria, Australia

#These authors contributed equally to this work.

Correspondence to: Cheng-Hao Jacky Chen, MD. Collaborative Research Group (CORE), Sydney, New South Wales, Australia; Faculty of Medicine and Health, University of Sydney, Sydney, New South Wales, Australia; Department of Anesthesiology and Perioperative Medicine, Medical College of Georgia, Augusta University, 1120 15th St, Augusta, GA 30912, USA. Email: cche6377@uni.Sydney.edu.Au.

Background: Spinal cord ischemia (SCI) is one of the most devastating complications of thoracic endovascular aortic repair (TEVAR). Prophylactic cerebrospinal fluid drainage (CSFD) has been shown to decrease the risk of SCI in open thoracic aortic procedures; however, its utility in TEVAR remains uncertain. This systematic review and meta-analysis aim to determine the role of prophylactic CSFD in preventing SCI in TEVAR.

Methods: A literature search of five databases was performed and all studies published before September 2022 that reported SCI rates in TEVAR patients undergoing prophylactic CSFD were included. A random effects meta-analysis of means or proportions was performed for single-arm data. Odds ratios (ORs) with 95% confidence intervals (CIs) were reported for comparisons between groups.

Results: A total of 4,793 patients undergoing TEVAR from 40 studies were included. The mean age was 68.8 years and 70.9% of patients were male. The overall SCI rate was 3.5%, with a 1.3% rate of immediate SCI and a 1.9% rate of delayed SCI. There were no significant differences in SCI rates between prophylactic CSFD patients and non-drained patients. Routine CSFD did not have a significant impact on SCI rates compared to non-drained patients. There was an increased rate of transient SCI with selective CSFD compared to non-drained patients (OR 2.08; 95% CI: 1.06–4.08; P=0.03). The most common drain-related complication was spinal headache (4.3%). The major complication rate was 1.6%, of which epidural or spinal hematoma (0.9%) was the most common, followed by intracranial or subdural hemorrhage (0.8%) and paraparesis or paraplegia (0.8%).

Conclusions: This study found no significant difference in SCI rates between prophylactic CSFD patients and their non-drained counterparts. CSFD is associated with a small but non-negligible risk of serious complications. Multi-center randomized controlled trials (RCTs) are warranted to help stratify the risk of both SCI and CSFD-related complications in patients undergoing endovascular aortic procedures.

Keywords: Cerebrospinal fluid drainage (CSFD); thoracic endovascular aortic repair (TEVAR); spinal cord ischemia (SCI); systematic review; meta-analysis



Submitted Mar 14, 2023. Accepted for publication Jun 06, 2023. Published online Jul 12, 2023.

doi: 10.21037/acs-2023-scp-17

View this article at: <https://dx.doi.org/10.21037/acs-2023-scp-17>

Introduction

Spinal cord ischemia (SCI) is one of the most devastating complications of thoracic aortic procedures. The traditional standard of open thoracic aortic repair sees SCI rates reported between 5–21% (1). Thoracic endovascular aortic repair (TEVAR) sees lower SCI rates reported between 0–17%, with procedures on thoracoabdominal aortic aneurysms (TAAA) carrying the highest risk (2-4).

Such procedures carry an inherent risk of spinal cord injury as thoracic aortic pathologies often involve branches of the aorta directly involved in the vascular supply of the spinal cord. The artery of Adamkiewicz had been traditionally thought to be the major culprit of such malperfusion but empirical experience has shown that occlusion of collateral supply (intercostal, lumbar, subclavian arteries) may contribute a larger factor to SCI, and incidence of SCI increases with extent of aortic coverage (5,6).

The perfusion of these critical arteries is termed spinal cord perfusion pressure (SCPP), and many neuroprotective techniques have since been employed to maintain SCPP and reduce the risk of paraplegia. Effective surgical techniques include left subclavian artery revascularization and the use of fenestrated and branched endografts (7,8). Similarly, anesthesiology techniques include mean arterial pressure (MAP) maintenance, cardiac index maintenance, and monitoring of motor and sensory evoked potentials throughout the procedure (9). One debated method of maintaining SCPP is through cerebrospinal fluid drainage (CSFD), for which the body of literature remains divided. Various studies have reported reduced risks of SCI following CSFD, and patients who receive routine prophylactic CSFD may receive the greatest benefit (10-13). Other studies suggest that SCI rates remain similar between drained and non-drained patients (14,15). As such, the use of CSFD has remained stable around 30% over the past decade (16).

Furthermore, CSFD is not a benign procedure, and carries complications including that of paraplegia itself. Such complications have been reported up to rates of 10% and multiple centers have abandoned the neuroprotective procedure following severe adverse outcomes, leading to many clinicians warning against overuse of the

procedure (17-20).

This systematic review and meta-analysis address the various CSFD indications implemented in TEVAR procedures for different aortic pathologies to provide more insight to the global experience of CSFD and its efficacy in protecting against SCI.

Methods

Literature search strategy

This systematic review was conducted according to the Preferred Reporting Items for Systematic Reviews and Meta-Analyses (PRISMA) (*Figure 1*) recommendations (21). Scopus, Embase, Medline, Cochrane and Evidence-Based Medicine (EBM) Reviews databases were searched by two independent authors (CHJ Chen, H Jiang) for the following electronic keyword and medical subject heading (MeSH) terms: (“TEVAR” OR “EVAR” OR “endovascular”) AND (“aneurysm” OR “aortic dissection” OR “TAA” OR “TAAA” OR “thoracic” OR “thoracoabdominal”) AND (“spinal cord ischemia” OR “spinal cord injury” OR “SCI” OR “paraplegia” OR “weakness” OR “paresis”) OR (“cerebrospinal fluid” OR “CSF” OR “CSFD” OR “drain” OR “drainage”). Studies published between the inception of the database to September 2022 containing the search terms in the title and abstract were included for screening following removal of duplicate studies. Published systematic reviews and references were manually screened for eligible studies.

Eligibility criteria

The inclusion criteria for the systematic review and meta-analysis include (I) studies with more than ten adult (>18 years of age) patients undergoing CSFD; (II) studies reporting SCI rates; and (III) English studies. Studies were excluded from analysis if it met any of the following exclusion criteria: (I) studies reporting open surgical procedures*; (II) studies focusing on redo endovascular procedures; and (III) editorials, reviews, conference abstracts and case reports. Studies were screened independently by two authors (CHJ Chen, VDD Nguyen) for inclusion in the meta-analysis and discrepancies were discussed with the

* Studies reporting both open and endovascular procedures were included if data on patients undergoing endovascular procedures could be extracted independently.

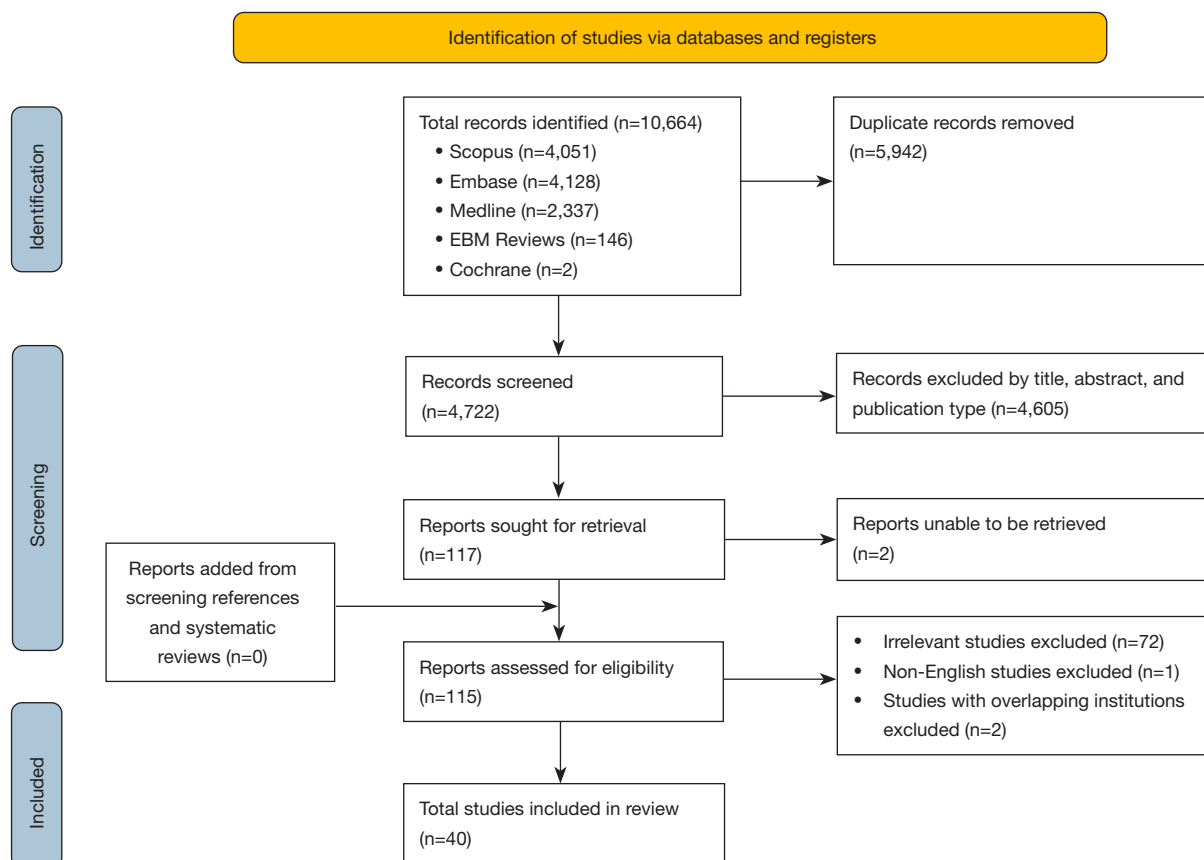


Figure 1 PRISMA search strategy. EBM, Evidence-Based Medicine; PRISMA, Preferred Reporting Items for Systematic Reviews and Meta-analyses.

third author (H Jiang).

Data extraction and critical appraisal

Data was extracted by three authors (CHJ Chen, H Jiang, VDD Nguyen) independently. Primary outcomes for this study included immediate, delayed, transient and permanent SCI. Secondary outcomes included CSFD complications, procedural complications, and mortality. Quality assessment was completed using a modified schema from the Institute of Health Economics (Alberta, Canada) (Table S1) (22). Studies were classified as low quality, moderate quality and high quality if it satisfied fewer than 10 criteria, 10–12 criteria and more than 12 criteria, respectively.

Statistical analysis

Pooled means and proportions were calculated using

OpenMeta[Analyst] (Center for Evidence-based Medicine, Brown University, USA) (23). Continuous and binary Dersimonian-Laird random effects models were used for meta-analyses of means and proportions, respectively. Pooled means are presented as mean [95% confidence interval (CI)] and pooled proportions are presented as rate (95% CI). The Box-Cox method described by McGrath *et al.* was used to convert median and interquartile range to mean and standard deviation to facilitate pooling (24). Odds ratios (ORs) and 95% CI were calculated for data comparing CSFD and non-CSFD patients using Review Manager (RevMan) (Version 5.4, The Cochrane Collaboration, 2020) (25). Heterogeneity between studies was calculated using the I^2 statistic, with I^2 values of 0–49%, 50–74% and 75–100% representing low, moderate and high heterogeneity, respectively. P values <0.05 were considered statistically significant. Publication bias was assessed by visual inspection of funnel plots by two authors (CHJ Chen and H

Jiang) independently. Significant asymmetry in funnel plots suggested publication bias for the outcome.

Results

Study details

A total of 10,664 records were identified following an extensive literature search, of which 40 studies (4,793 patients) were included following exclusion (*Table 1*). The earliest study was published in 2005. The majority of the data was sourced from the United States (16 studies), followed by Japan (5 studies), Germany (4 studies), and Italy (4 studies) (*Table 1*). Seventeen studies were

found to be of low quality, 21 of medium quality, and two studies were of high quality. There was a total of 14 comparative studies and 26 single arm studies included (*Table 2*).

Procedures

All studies included in the meta-analysis targeted thoracic aortic pathologies. Most studies analyzed multiple aortic pathologies, with the most common pathology being thoracic and thoracoabdominal aneurysmal disease. Standard TEVAR was studied in 34 studies, with 11 studies exclusively or simultaneously addressing fenestrated or branched endograft procedures (*Table S1*). Elective, urgent,

Table 1 Study details

First author, publication year	Data type	Data source	Country
Acher (26), 2016	Single center	University of Wisconsin School of Medicine and Public Health	United States
Adams (27), 2019	Single center	Carilion Roanoke Memorial Hospital	United States
Addas (28), 2022	Single center	University Health Network Research Centre, Toronto	Canada
Angiletta (29), 2021	Multicenter	University of Bari School of Medicine; University of Insubria School of Medicine; Bolzano Hospital; University of Padua School of Medicine	Italy
Arnautakis (30), 2014	Single center	Johns Hopkins Hospital	United States
Banno (31), 2021	Single center	Nagoya University Graduate School of Medicine	Japan
Bisdas (18), 2015	Single center	St. Franziskus Hospital	Germany
Bobadilla (32), 2013	Single center	St. Claire Health Centre, Kentucky	United States
Chaudhary (33), 2021	Single center	Beth Israel Deaconess Medical Center, Harvard Medical School	United States
Cheung (34), 2005	Single center	University of Pennsylvania	United States
Chuter (35), 2008	Single center	University of California, San Francisco	United States
D'Oria (36), 2019	Single center	University Hospital of Cattinara ASUITs, Trieste	Italy
D'Souza (37), 2009	Single center	Mayo Clinic, Rochester, Minnesota	United States
Desart (38), 2013	Single center	University of Florida, Gainesville	United States
Fossaceca (39), 2013	Single center	Maggiore Della Carita Hospital, A. Avogadro University, Novara	Italy
Hiraoka (40), 2018	Single center	Kurashiki Central Hospital, Kurashiki, Okayama	Japan
Hnath (41), 2008	Single center	Albany Medical Center, New York	United States
Iafrancesco (42), 2014	Single center	Queen Elizabeth University Hospital	United Kingdom
Iyer (43), 2006	Single center	McGill University	Canada
Juszczak (19), 2019	Single center	Heartlands Hospital, Birmingham	United Kingdom
Kato (44), 2015	Single center	Morinomiya Hospital	Japan
Khoynezhad (45), 2013	Multicenter	20 different centers (RESCUE trial)*	United States

Table 1 (continued)

Table 1 (continued)

First author, publication year	Data type	Data source	Country
Kitpanit (46), 2021	Single center	New York Presbyterian Hospital	United States
Kotelis (47), 2015	Single center	Heidelberg University Hospital	Germany
Maier (48), 2019	Single center	University Heart Center Freiburg	Germany
Maurel (49), 2015	Single center	CHRU de Lille	France
Mazzeffi (50), 2018	Single center	University of Maryland	United States
Nathan (51), 2015	Single center	University of Washington	United States
Pasqualucci (52), 2020	Multicenter	Santa Maria della Misericordia University Hospital, Italy; Rashid Hospital, DHA, Dubai	Italy; United Arab Emirates
Preventza (53), 2009	Single center	Arizona Heart Institute	United States
Rizk (54), 2021	Single center	Ain Shams University, Cairo	Egypt
Schurink (55), 2007	Single center	University Hospital Maastricht	Netherlands
Seike (15), 2022	Single center	National Cerebral and Cardiovascular Center	Japan
Song (12), 2017	Single center	Gangnam Severance Hospital, Yonsei University College of Medicine	South Korea
Sugiyama (56), 2022	Single center	Shinshu University Hospital	Japan
Sulzinski (57), 2022	Single center	Medstar Hospital, Washington	United States
Verma (58), 2022	Single center	All India Institute of Medical Sciences	India
Verzini (59), 2020	Single center	AOU Citta della Salute e della Scienza, University of Turin; S Giovanni-Addolorata Hospital, Rome; A.O. Perugia, Perugia	Italy
Yang (60), 2019	Single center	University of British Columbia	Canada
Zipfel (61), 2013	Single center	Deutsches Herzzentrum Berlin	Germany

*, the individual centers in the RESCUE trial in the study by Khoynezhad *et al.* 2013 were examined and found to not overlap with the other studies in the included.

Table 2 Study details

First author, publication year	Patient recruitment	Data source type	Data type (comparison)	Years of recruitment	Patients (n)	Quality of evidence
Acher (26), 2016	Retrospective	Single center	Single arm	2005–2014	155	Low
Adams (27), 2019	Retrospective	Single center	Multi-arm (Gore TAG endoprosthesis post-FDA approval vs. phase II trial)	2005–2006	50	Medium
Addas (28), 2022	Retrospective	Single center	Single arm	2017–2020	17	Medium
Angiletta (29), 2021	Retrospective	Multicenter	Single arm	2018–2019	14	High
Arnautakis (30), 2014	Retrospective	Single center	Multi-arm (adjunctive procedure vs. no adjunctive procedure for TEVAR)	2005–2012	90	Low
Banno (31), 2021	Retrospective	Single center	Multi-arm (SCI vs. no SCI)	2008–2018	212	Medium
Bisdas (18), 2015	Retrospective	Single center	Multi-arm (SCI vs. no SCI)	2010–2014	142	Medium
Bobadilla (32), 2013	Retrospective	Single center	Single arm	2005–2012	94	Low

Table 2 (continued)

Table 2 (continued)

First author, publication year	Patient recruitment	Data source type	Data type (comparison)	Years of recruitment	Patients (n)	Quality of evidence
Chaudhary (33), 2021	Retrospective	Single center	Multi-arm (CSFD vs. no CSFD)	2014–2019	235	Low
Cheung (34), 2005	Prospective	Single center	Single arm	1999–2004	75	Medium
Chuter (35), 2008	Prospective	Single center	Single arm	2006–2007	22	Medium
D'Oria (36), 2019	Retrospective	Single center	Single arm	2015–2017	24	Medium
D'Souza (37), 2009	Retrospective	Single center	Single arm	2001–2007	20	Low
Desart (38), 2013	Retrospective	Single center	Multi-arm (SCI vs. no SCI)	2000–2011	607	Medium
Fossaceca (39), 2013	Retrospective	Single center	Single arm	2005–2011	53	Low
Hiraoka (40), 2018	Retrospective	Single center	Multi-arm (SCI vs. no SCI)	2008–2014	175	Medium
Hnath (41), 2008	Prospective	Single center	Multi-arm (CSFD vs. no CSFD)	2004–2006	121	Medium
Iafrancesco (42), 2014	Retrospective	Single center	Single arm	2007–2012	62	Low
Iyer (43), 2006	Retrospective	Single center	Multi-arm (elective vs. emergent)	1999–2005	70	Low
Juszczak (19), 2019	Retrospective	Single center	Single arm	2008–2017	270	Medium
Kato (44), 2015	Retrospective	Single center	Single arm	2007–2014	54	Low
Khoynezhad (45), 2013	Prospective	Multicenter	Single arm	2010–2012	59	Medium
Kitpanit (46), 2021	Prospective	Single center	Multi-arm (SCI vs. no SCI)	2014–2019	106	Medium
Kotelis (47), 2015	Prospective	Single center	Single arm	2012–2013	30	Medium
Maier (48), 2019	Retrospective	Single center	Multi-arm (CSFD vs. no CSFD)	1998–2014	223	Low
Maurel (49), 2015	Retrospective	Single center	Multi-arm (before vs. after implantation of modified peri-operative protocol)	2004–2013	204	Medium
Mazzeffi (50), 2018	Retrospective	Single center	Single arm	2011–2015	102	Low
Nathan (51), 2015	Retrospective	Single center	Single arm	2006–2013	47	Medium
Pasqualucci (52), 2020	Prospective	Multicenter	Single arm	2016–2018	47	Low
Preventza (53), 2009	Prospective	Single center	Single arm	2000–2008	346	Low
Rizk (54), 2021	Retrospective	Single center	Single arm	2014–2020	23	Low
Schurink (55), 2007	Retrospective	Single center	Single Arm	2000–2005	13	Low
Seike (15), 2022	Retrospective	Single center	Multi-arm (CSFD vs. no CSFD)	2009–2020	204	Medium
Song (12), 2017	Prospective	Single center	Single arm	2012–2014	81	Medium
Sugiyama (56), 2022	Retrospective	Single center	Single arm	2011–2019	31	Medium
Sulzinski (57), 2022	Retrospective	Single center	Single arm	2017–2018	130	Low
Verma (58), 2022	Retrospective	Single center	Multi-arm (stent graft length \leq 200 mm vs. stent graft length $>$ 200 mm)	2014–2020	38	Medium
Verzini (59), 2020	Retrospective	Single center	Single arm	2012–2018	21	High
Yang (60), 2019	Retrospective	Single center	Single arm	2007–2016	130	Medium
Zipfel (61), 2013	Retrospective	Single center	Single arm	2000–2010	406	Low

n, number; FDA, Food and Drug Association; TEVAR, thoracic endovascular aortic repair; SCI, spinal cord ischemia; CSFD, cerebrospinal fluid drainage.

and emergent procedures were all included in the study. Selective CSFD protocols were utilized in 23 studies and routine in 17 studies. Where reported, brief details about the selective indication of each study are included in [Table S2](#).

Baseline characteristics

A total of 4,793 patients undergoing thoracic endovascular aortic procedures from 40 studies were included in the meta-analysis. The mean age was 68.8 years (95% CI: 67.3–70.3; $I^2=99\%$). Of these patients, 70.9% were male (95% CI: 66.7–75.0%; $I^2=90\%$). The left subclavian artery (LSA) was covered in 42.7% of patients (95% CI: 32.3–53.2%; $I^2=98\%$), and 18.7% (95% CI: 14.2–23.1%; $I^2=94\%$) of the total number of patients underwent a LSA revascularization procedure prior to their operation; 30.6% (95% CI: 23.5–37.7%; $I^2=98\%$) of patients had prior aortic repair, with 19.3% (95% CI: 14.0–24.6%; $I^2=97\%$) having had prior abdominal aortic repair, and 18.8% (95% CI: 12.9–24.8%; $I^2=97\%$) having had prior thoracic aortic repair ([Table 3](#)). Further patient comorbidities and vascular risk factors are detailed in [Table 3](#). Baseline characteristics were highly heterogeneous throughout the various patient cohorts, attributable to the variety of conditions requiring TEVAR and their associated risk factors. There was a mixture of studies focusing on a single disease process, such as aneurysmal disease or blunt aortic injury, and also studies which covered multiple disease processes ([Table S1](#)).

SCI rates

The incidence of SCI in this study was 232, translating to a rate of 3.5% (95% CI: 2.6–4.4%; $I^2=67\%$) ([Figure 2](#)). The immediate SCI rate, defined as presence at the emergence of anesthesia, was 1.3% (95% CI: 0.7–1.8%; $I^2=60\%$), and the delayed SCI rate was 1.9% (95% CI: 1.2–2.5%; $I^2=53\%$). Compared to non-drained patients, CSFD patients demonstrated no significant difference in rates of any SCI (OR 1.34; 95% CI: 0.88–2.04; $P=0.17$), transient SCI (OR 1.84; 95% CI: 0.95–3.54; $P=0.07$) or permanent SCI (OR 1.25; 95% CI: 0.47–3.30; $P=0.66$). Routine CSFD also did not produce any significant difference in rates of any SCI (OR 0.54; 95% CI: 0.14–2.03; $P=0.36$), transient SCI (OR 0.16; 95% CI: 0.01–3.13; $P=0.23$) and permanent SCI (OR 0.27; 95% CI: 0.03–2.40; $P=0.24$). Selective CSFD produced comparable results for rates of any SCI

(OR 1.48; 95% CI: 0.98–2.24; $P=0.06$) and permanent SCI (OR 1.51; 95% CI: 0.52–4.36; $P=0.44$), but this population was associated with an increased rate of transient SCI (OR 2.08; 95% CI: 1.06–4.08; $P=0.03$). CSFD failed to produce any significant effect on SCI rate in the population with aneurysmal disease (OR 1.39; 95% CI: 0.81–2.37; $P=0.23$) or dissection related disease (OR 1.31; 95% CI: 0.17–9.87; $P=0.79$). There was a trend towards an increased rate of SCI in drained elective patients (OR 2.51; 95% CI: 0.97–6.52; $P=0.06$), but this result did not reach significance ([Table 4](#); [Figures 3–6](#)).

Publication bias was assessed for data comparing CSFD and non-CSFD patients. There was no convincing evidence of funnel plot asymmetry on visual inspection for any SCI, permanent SCI or transient SCI in patients undergoing CSFD versus non-CSFD patients ([Figures S1–S3](#)).

CSFD complication rates

A spinal headache was reported in 4.3% (95% CI: 1.8–6.9%; $I^2=73\%$) of patients undergoing CSFD procedures. Major complications were reported in 1.6% (95% CI: 0.8–2.4%; $I^2=22\%$) of CSFD procedures. These complications included meningitis in 0.6% (95% CI: 0.2–1.1%; $I^2=0$) of patients, a CSF leak requiring reintervention in 0.7% (95% CI: 0.2–1.1%; $I^2=0$), frank insertion site bleeding in 0.7% (95% CI: 0.2–1.1%; $I^2=0$), a retained catheter tip in 0.7% (95% CI: 0.2–1.2%; $I^2=0$), epidural or spinal hematoma in 0.9% (95% CI: 0.4–1.4%; $I^2=0$), intracranial or subdural hemorrhage in 0.8% (95% CI: 0.3–1.3%; $I^2=0$), significant paraparesis or paraplegia independent to the operation in 0.8% (95% CI: 0.3–1.3%; $I^2=0$), and death in 0.6% (95% CI: 0.2–1.0%; $I^2=0$) ([Table 5](#)).

Operative outcomes

In-hospital or perioperative mortality occurred at a rate of 1.7% (95% CI: 1.1–2.3%; $I^2=53\%$). Mid-term mortality, reported as mortality within a year, occurred at a rate of 4.5% (95% CI: 3.2–5.8%; $I^2=70\%$). Endoleaks of any type were reported at a rate of 12.9% (95% CI: 9.0–16.9%; $I^2=90\%$). Cerebrovascular accidents, defined as either stroke or transient ischemic attacks, occurred at a rate of 2.0% (95% CI: 1.3–2.7%; $I^2=38\%$). The mean reported total operation time was 180 minutes (range, 63–373 minutes), and the mean reported estimated blood loss was 187 mL (range, 50–714 mL) ([Table 6](#)).

Table 3 Baseline characteristics

Characteristic	Patients (n) [studies]	Weighted pooled estimate (95% CI)	Heterogeneity I ² (%)
Age (years)*	4,624 [37]	68.8 (67.3, 70.3)	99
Male (%)	3,256 [38]	70.9 (66.7, 75.0)	90
LSA coverage (%)	1,234 [22]	42.7 (32.3, 53.2)	98
LSA revascularization (%)	566 [24]	18.7 (14.2, 23.1)	94
Prior aortic repair			
Any prior aortic repair (%)	1,047 [26]	30.6 (23.5, 37.7)	98
Prior AAA repair (%)	644 [22]	19.3 (14.0, 24.6)	97
Prior thoracic aneurysm repair (%)	295 [13]	18.8 (12.9, 24.8)	97
Chronic renal insufficiency			
GFR >15 and not on hemodialysis* (%)	598 [21]	19.6 (14.6, 24.5)	94
GFR <15 or on hemodialysis (%)	66 [13]	3.7 (2.1, 5.3)	60
Hypertension (%)	2,791 [30]	79.0 (72.1, 85.8)	97
Dyslipidemia (%)	825 [14]	49.1 (35.5, 62.7)	98
Smoking history			
Any smoking history (%)	1,035 [19]	51.3 (38.9, 63.7)	98
Current smoker (%)	272 [10]	27.3 (19.0, 35.5)	92
History of COPD (%)	888 [27]	26.5 (21.2, 31.9)	94
History of CAD (%)	911 [28]	28.8 (22.9, 34.6)	96
History of CHF (%)	79 [10]	5.4 (3.0, 7.9)	79
History of PAD (%)	180 [10]	15.4 (9.9, 20.9)	94
History of DM (%)	398 [25]	14.2 (10.8, 17.6)	89
History of stroke or CVD (%)	243 [14]	11.2 (7.5, 14.9)	90

*, Khoynzhad *et al.* 2013 was excluded following sensitivity analysis. Chronic renal insufficiency was defined as a GFR less than 60 mL/min or a creatinine greater than 1.5 mg/dL. Khoynzhad *et al.* 2013 was excluded from sensitivity analysis as its young patient cohort significantly skewed the mean age. This may be attributable to the mode of injury (BAI) leading to TEVAR in his patient population. n, number of patients; CI, confidence interval; LSA, left subclavian artery; AAA, abdominal aortic aneurysm; GFR, glomerular filtration rate; COPD, chronic obstructive pulmonary disease; CAD, coronary artery disease; CHF, congestive heart failure; PAD, peripheral artery disease; DM, diabetes mellitus, CVD, cerebrovascular disease; BAI, blunt aortic injury.

Discussion

SCI is a major complication of aortic procedures that predisposes patients to notable life-long morbidity. While SCI rates have decreased following the widespread use of TEVAR in place of open aortic surgery, it continues to pose a significant threat to patients, occurring in 0–18% of patients (35,44). The current systematic review reported an overall SCI rate of 3.5%, including both transient and permanent SCI. TEVAR operators worldwide have adopted

protocols aimed at monitoring and maintaining spinal cord perfusion during TEVAR, including neuromonitoring, intraoperative MAP maintenance and LSA revascularization (33,48,50,60). CSFD is a treatment adjunct that has been shown to reduce the risk of SCI in open aortic procedures. A randomized controlled trial (RCT) published in 2002 by Coselli and colleagues showed a significant decrease in paraplegia rates in CSFD patients undergoing open TAAA repair compared to their non-drained counterparts (62). Similarly, a systematic review and meta-analysis of RCTs

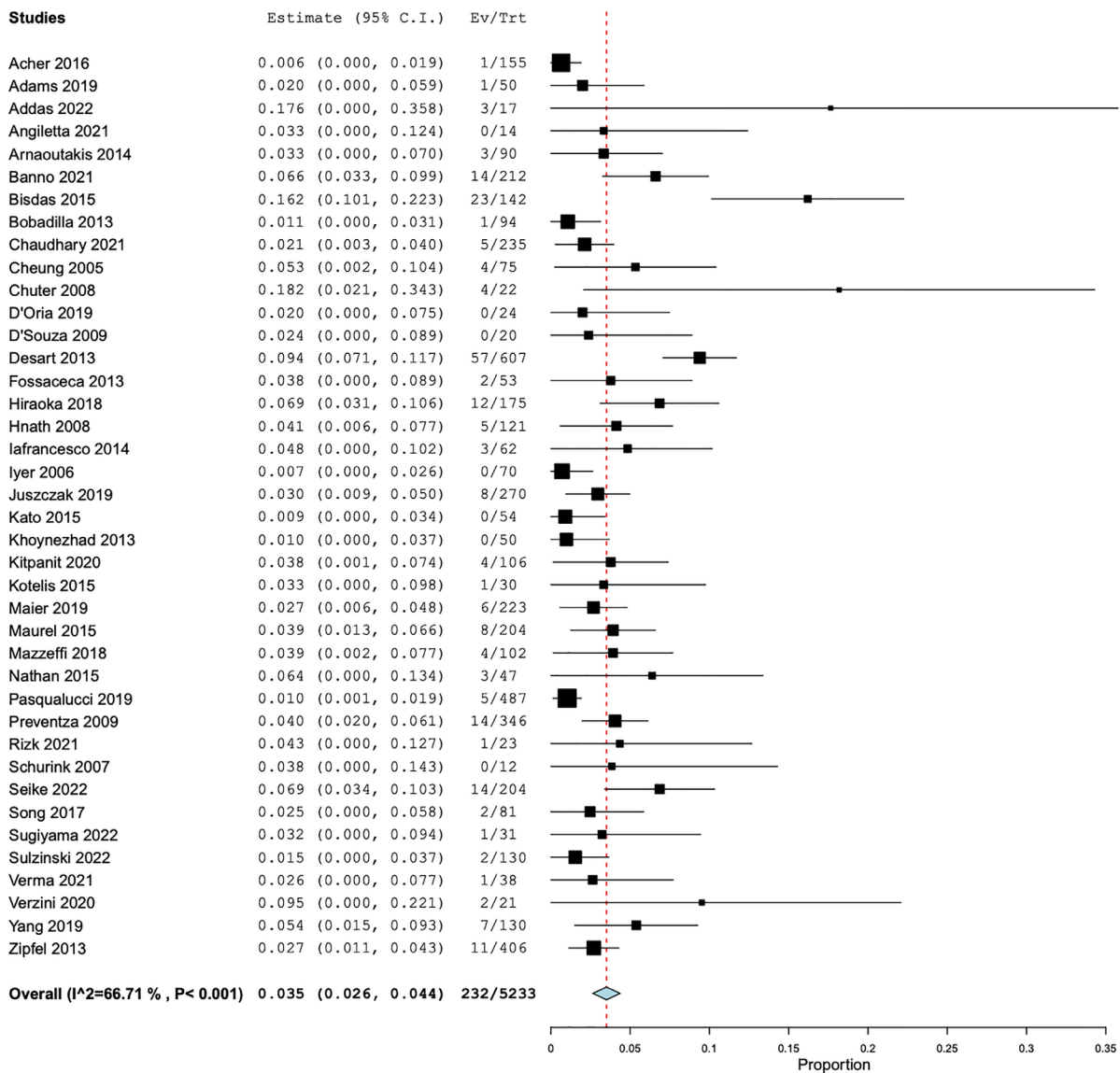


Figure 2 The rate of spinal cord injury across all studies. C.I., confidence interval.

and cohort studies showed significantly lower rates of paraplegia and paraparesis following CSFD in open aortic surgery (63).

The utility of CSFD in endovascular aortic procedures has been debated in the literature. Currently, there are no RCTs to the authors' knowledge that investigates the benefit of CSFD in patients undergoing TEVAR. The current systematic review found no significant difference in either transient or permanent SCI rates between prophylactic CSFD and non-CSFD patients undergoing TEVAR for

aortic aneurysms or dissections. This is consistent with a systematic review and meta-analysis by Wong *et al.*, and we add that neither routine nor selective CSFD significantly reduced the risk of SCI (14). This contrasts the findings of a systematic review by Zhang *et al.*, which found that routine CSFD is superior to selective CSFD in reducing the risk of SCI (11). However, no direct comparison was made between drained and non-drained patients in that study. Several cohort studies have reported a significant decrease in SCI rates with prophylactic CSFD. Maier *et al.*

Table 4 Spinal cord ischemia rates

Outcome	Patients* (n) [studies]	Odds ratio (95% CI)	P value	Heterogeneity I ² (%)
CSFD vs. non-CSFD				
Any SCI	102 [40]	1.34 (0.88, 2.04)	0.17	21
Transient SCI	33 [32]	1.84 (0.95, 3.54)	0.07	0
Permanent SCI	36 [32]	1.25 (0.47, 3.30)	0.66	62
Routine CSFD vs. non-CSFD				
Any SCI	28 [19]	0.54 (0.14, 2.03)	0.36	28
Transient SCI	12 [14]	0.16 (0.01, 3.13)	0.23	–
Permanent SCI	5 [14]	0.27 (0.03, 2.40)	0.24	0
Selective CSFD vs. non-CSFD				
Any SCI	78 [23]	1.48 (0.98, 2.24)	0.06	16
Transient SCI	21 [19]	2.08 (1.06, 4.08)	0.03	0
Permanent SCI	31 [19]	1.51 (0.52, 4.36)	0.44	66
TAA and TAAA only (CSFD vs. non-CSFD)				
Any SCI	33 [8]	1.39 (0.81, 2.37)	0.23	0
Elective procedures only (CSFD vs. non-CSFD)				
Any SCI	26 [5]	2.51 (0.97, 6.52)	0.06	46

* , refers to patients of each category who received CSFD prior to TEVAR and experienced SCI. n, number of patients; CI, confidence interval; CSFD, cerebrospinal fluid drainage; SCI, spinal cord ischemia; TAA, thoracic aortic aneurysm; TAAA, thoracoabdominal aortic aneurysm.

found a 3.9% decrease in SCI rates in patients undergoing CSFD compared to their non-drained counterparts, and Hnath *et al.* found an 8% decrease in SCI rates for the same comparison in 121 patients (41,48). Interestingly, we found an increased risk of transient SCI in patients who underwent selective CSFD compared to those who were not prophylactically drained. This may be due to the presence of preoperative risk factors for SCI in patients who are selected to undergo CSFD, such as extensive aortic coverage, prior aortic repair and distal descending aortic coverage (33,50,53).

Currently, CSFD protocols vary greatly between centers, and institutions report different CSF pressure targets and maximum drainage rates. As SCPP increases with lower spinal fluid pressures, lower CSF target pressures may decrease the incidence of SCI (32). In the current study, CSF pressure targets largely fall between 8 mmHg and 15 mmHg. Kato *et al.* and Maurel *et al.* adopted the most aggressive pressure targets of 7.3 mmHg (10 cmH₂O) in

their patient population (44,49). Previous studies have also found that greater drainage volumes were associated with more drain-related complications, requiring operators to set maximum drainage volumes or rates (64–66). Drainage rates generally range from 10 to 20 mL/hour in studies included in this systematic review. Kotelis *et al.* reported the highest mean drainage amount (714 mL) and the highest rate of drain-related complications (23%) of studies included in this meta-analysis (47). Further studies are required to determine the ideal pressure targets and drainage rates that strike a balance between optimal spinal cord protection with the least drain-related complications.

CSFD is associated with potential complications that may lead to significant long-term morbidity. A systematic review and meta-analysis of over 30 studies published by Rong *et al.* found an overall complication rate of 6.5% for patients undergoing CSFD for open and endovascular aortic procedures (67). The same study also reported a 2.5% rate of major complications, including epidural hematoma,

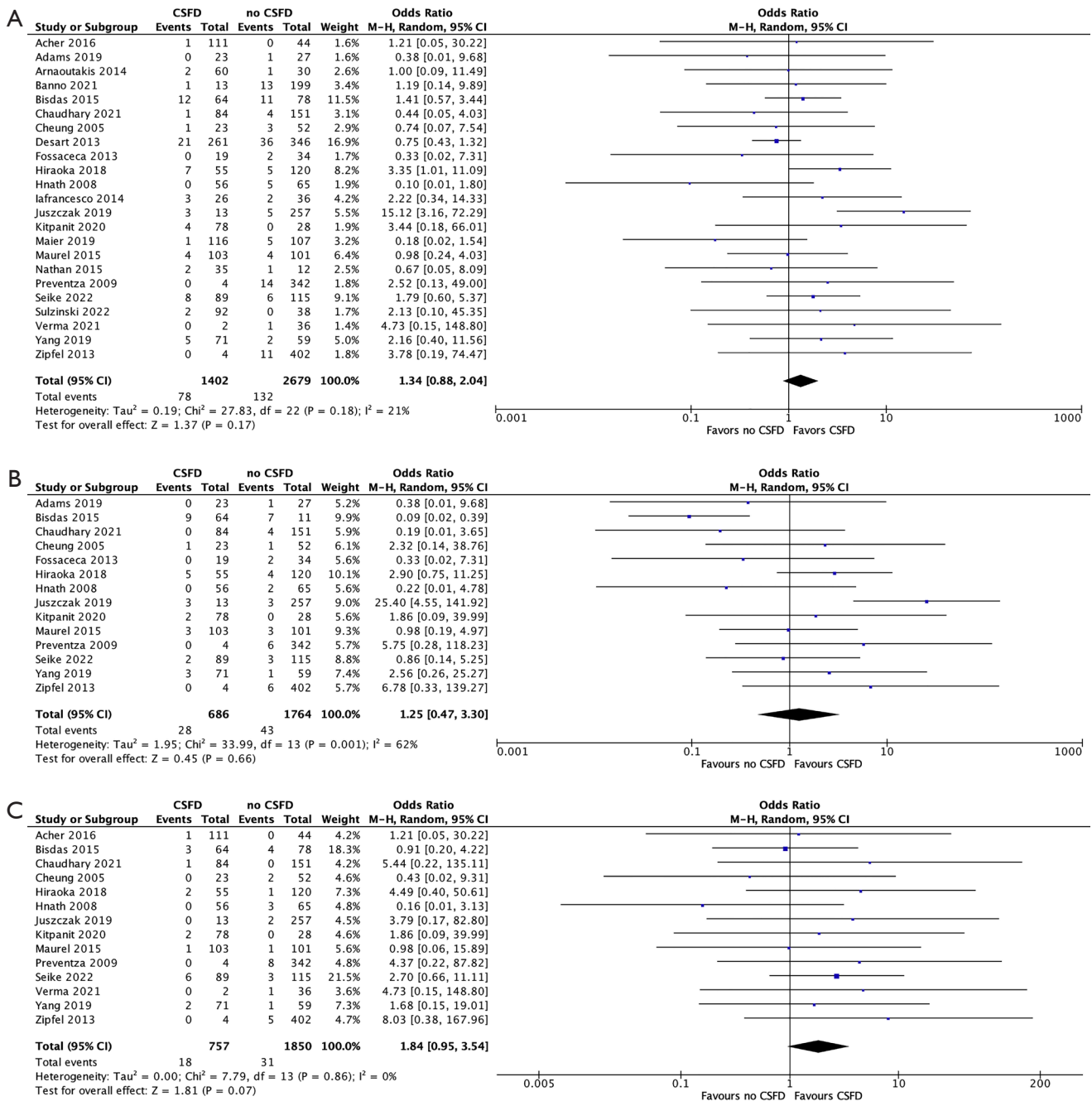


Figure 3 Forest plots comparing SCI rates in patients undergoing CSFD versus no CSFD. (A) Any SCI; (B) permanent SCI; (C) transient SCI. CSFD, cerebrospinal fluid drain; M-H, Mantel-Haenszel; CI, confidence interval; df, degrees of freedom; SCI, spinal cord ischemia.

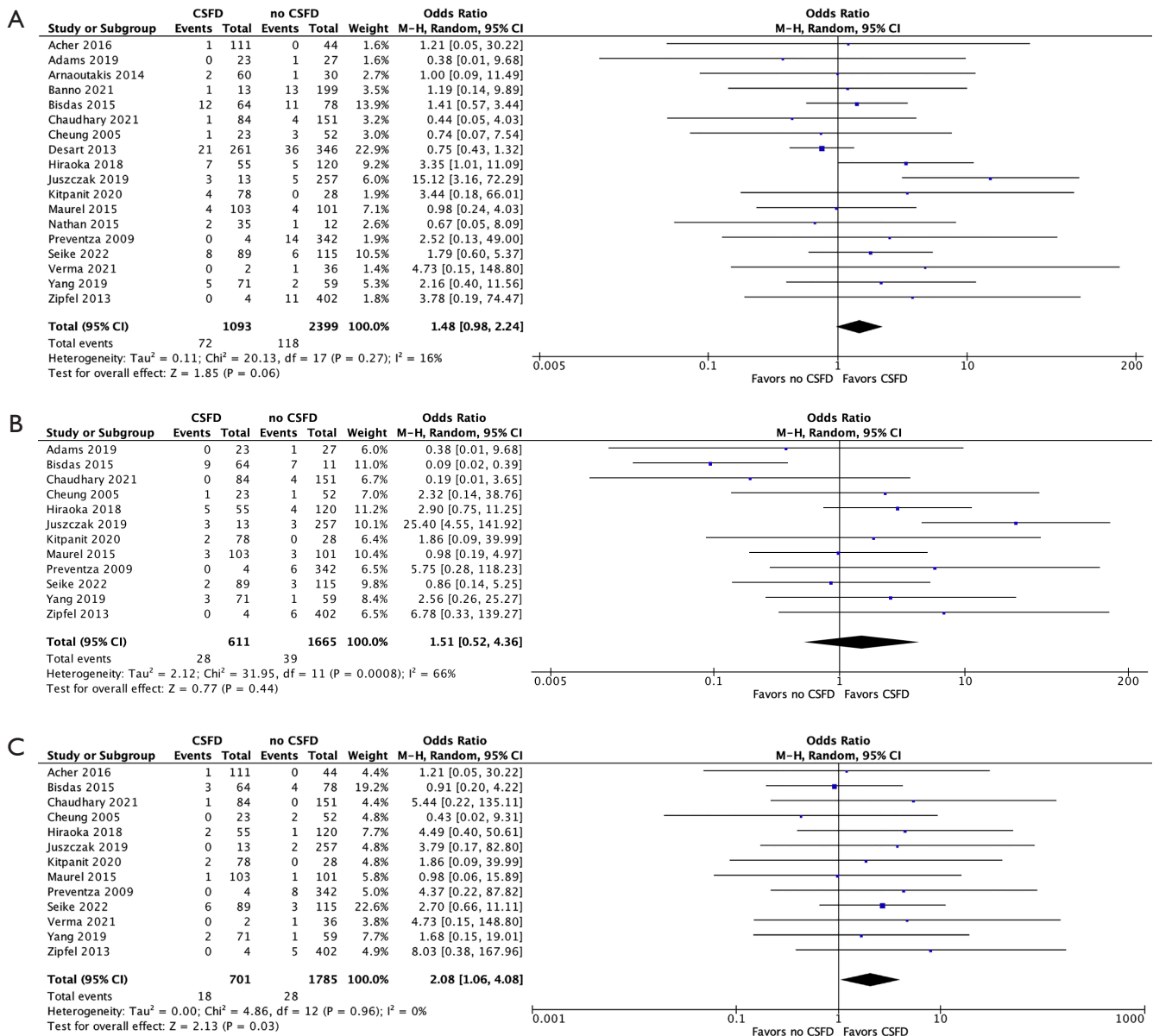


Figure 4 Forest plots comparing SCI rates in patients undergoing selective CSFD versus no CSFD. (A) Any SCI; (B) permanent SCI; (C) transient SCI. CSFD, cerebrospinal fluid drain; M-H, Mantel-Haenszel; CI, confidence interval; df, degrees of freedom; SCI, spinal cord ischemia.

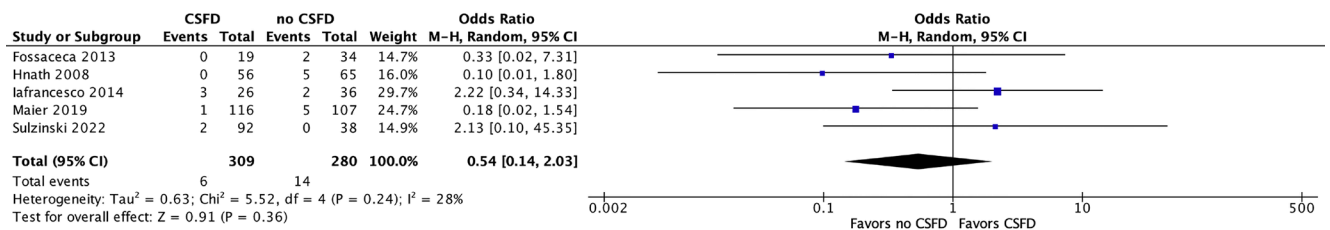


Figure 5 Forest plots comparing overall SCI rates in patients undergoing routine CSFD versus no CSFD. CSFD, cerebrospinal fluid drain; M-H, Mantel-Haenszel; CI, confidence interval; df, degrees of freedom; SCI, spinal cord ischemia.

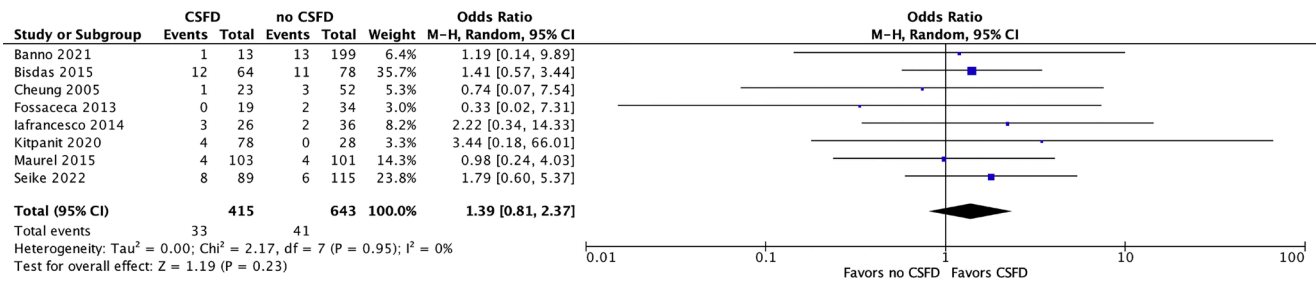


Figure 6 Forest plots comparing SCI rates in patients undergoing CSFD versus no CSFD in aneurysmal disease only. CSFD, cerebrospinal fluid drain; M-H, Mantel-Haenszel; CI, confidence interval; df, degrees of freedom; SCI, spinal cord ischemia.

CSFD related complication	Patients (n) [studies]	Weighted pooled estimate (95% CI), (%)	Heterogeneity I ² (%)
Common complications			
Spinal headache	38 [10]	4.3 (1.8, 6.9)	73
Major complications*			
Any major complication	35 [19]	1.6 (0.8, 2.4)	22
Meningitis	1 [18]	0.6 (0.2, 1.1)	0.0
CSF leak requiring intervention	7 [17]	0.7 (0.2, 1.1)	0.0
Frank insertion site bleeding	6 [18]	0.7 (0.2, 1.1)	0.0
Retained catheter tip	3 [18]	0.7 (0.2, 1.2)	0.0
Epidural or spinal hematoma	8 [18]	0.9 (0.4, 1.4)	0.0
Intracranial or subdural hemorrhage	10 [19]	0.8 (0.3, 1.3)	0.0
Significant paraparesis or paraplegia**	6 [20]	0.8 (0.3, 1.3)	0.0
Death	2 [24]	0.6 (0.2, 1.0)	0.0

*, major complications are defined by events that may cause significant morbidity or that require repeat intervention. The major complications investigated in this study are meningitis, CSF leak requiring re-intervention, frank insertion site bleeding, retained catheter tip, epidural or spinal hematoma, intracranial or subdural hemorrhage, significant paraparesis or paraplegia and death. Spinal headaches and minor insertion site bleeding or bloody CSF are not accounted for in major complications. These complications are reported as directly related to the CSFD process, not as a result of the operation. **, significant paraparesis or paraplegia is defined as sensory change or weakness of the lower limbs that is prolonged or permanent. CSFD, cerebrospinal fluid drainage; n, number of patients; CI, confidence interval; CSF, cerebrospinal fluid.

Operative outcome	Patients (n) [studies]	Weighted pooled estimate (95% CI), (%)	Heterogeneity I ² (%)
In-hospital or perioperative mortality	88 [31]	1.7 (1.1, 2.3)	53
30-day to 1-year mortality*	176 [29]	4.5 (3.2, 5.8)	70
Endoleak (of any type)	246 [21]	12.9 (9.0, 16.9)	90
Cerebrovascular accident (stroke or TIA)	73 [26]	2.0 (1.3, 2.7)	38

*, Angiletta *et al.* 2021 was excluded following sensitivity analysis. Angiletta *et al.* was excluded from analysis following sensitivity analysis due to their high 30D-1Y mortality rate. n, number of patients; CI, confidence interval; TIA, transient ischemic attack; 30D-1Y, 30 days to 1 year.

intracranial hemorrhage, meningitis, and drain-related neurological deficit (67). This is similar to the current study, which reported a 1.6% risk of major complications following CSFD. The most common major complication in this systematic review was epidural or spinal hematoma (weighted pooled estimate of 0.9%), followed by intracranial or subdural hemorrhage (weighted pooled estimate of 0.8%) and significant paraparesis or paraplegia (weighted pooled estimate of 0.8%). Of these, intracranial hemorrhage is undoubtedly the most dangerous complication, which may lead to permanent neurological damage and even death despite immediate management. In the current study, both drain-related deaths occurred following large intracranial bleeds, one intraoperatively and the other following drain removal (19,47). Several studies have found that a larger total volume drained was a significant risk factor for intracranial hemorrhage, thus requiring CSFD operators to take extra caution in monitoring total CSF drainage volume both intraoperatively and postoperatively (64-66). Such risks, in conjunction with debatable benefit of CSFD, should warn operators that CSFD prior to TEVAR should be a judicious decision and may vary patient to patient.

Limitations and future directions

Several limitations were present in the current study. The meta-analysis did not account for confounding variables that influence SCI risk, including procedural risk factors like increased thoracic aorta coverage and patient risk factors like previous abdominal aortic aneurysm (AAA) repair, peripheral artery disease, and renal insufficiency (46,68,69). Similarly, there was high heterogeneity in the baseline characteristics of patients included in this study which may have contributed to the overall SCI risk (Table 3). The CSFD protocol and other methods of reducing SCI risk varied greatly between studies, preventing an accurate comparison of the true impact of CSFD on SCI risk. Lastly, following quality analysis of the studies included, only two of 41 studies were deemed to be of high quality. Large, multicenter RCTs are required to further assess the utility of routine and selective CSFD in preventing SCI and to investigate true indications for selective prophylactic CSFD.

Conclusions

This study found no significant reduction in SCI rates in patients undergoing TEVAR with prophylactic CSFD.

TEVAR teams need to stratify both the risk of SCI and CSFD complications when planning for endovascular intervention with prophylactic CSFD. Large RCTs are required to accurately assess the utility of routine and selective prophylactic CSFD in reducing SCI risk of TEVAR patients.

Acknowledgments

Funding: None.

Footnote

Conflicts of Interest: The authors have no conflicts of interest to declare.

Open Access Statement: This is an Open Access article distributed in accordance with the Creative Commons Attribution-NonCommercial-NoDerivs 4.0 International License (CC BY-NC-ND 4.0), which permits the non-commercial replication and distribution of the article with the strict proviso that no changes or edits are made and the original work is properly cited (including links to both the formal publication through the relevant DOI and the license). See: <https://creativecommons.org/licenses/by-nc-nd/4.0/>.

References

1. Gravereaux EC, Faries PL, Burks JA, et al. Risk of spinal cord ischemia after endograft repair of thoracic aortic aneurysms. *J Vasc Surg* 2001;34:997-1003.
2. Bavaria JE, Appoo JJ, Makaroun MS, et al. Endovascular stent grafting versus open surgical repair of descending thoracic aortic aneurysms in low-risk patients: a multicenter comparative trial. *J Thorac Cardiovasc Surg* 2007;133:369-77.
3. Malloy PC, Raghavan A, Elder T, et al. Cerebrospinal Fluid Drainage During Endovascular Aortic Aneurysm Repair: A Systematic Review of the Literature and Treatment Recommendations. *Vasc Endovascular Surg* 2020;54:205-13.
4. Gaudino M, Khan FM, Rahouma M, et al. Spinal cord injury after open and endovascular repair of descending thoracic and thoracoabdominal aortic aneurysms: A meta-analysis. *J Thorac Cardiovasc Surg* 2022;163:552-64.
5. Griep RB, Griep EB. Spinal cord protection in surgical and endovascular repair of thoracoabdominal aortic disease. *J Thorac Cardiovasc Surg* 2015;149:S86-90.

6. Miranda V, Sousa J, Mansilha A. Spinal cord injury in endovascular thoracoabdominal aortic aneurysm repair: prevalence, risk factors and preventive strategies. *Int Angiol* 2018;37:112-26.
7. Hu Z, Zhang Z, Liu H, et al. Fenestrated and Branched Stent-Grafts for the Treatment of Thoracoabdominal Aortic Aneurysms: A Systematic Review and Meta-Analysis. *Front Cardiovasc Med* 2022;9:901193.
8. Xie W, Xue Y, Li S, et al. Left subclavian artery revascularization in thoracic endovascular aortic repair: single center's clinical experiences from 171 patients. *J Cardiothorac Surg* 2021;16:207.
9. Marturano F, Nisi F, Giustiniano E, et al. Prevention of Spinal Cord Injury during Thoracoabdominal Aortic Aneurysms Repair: What the Anaesthesiologist Should Know. *J Pers Med* 2022;12:1629.
10. Englund R. Review of Thoracic Endovascular Aneurysm Repair (TEVAR), Spinal Cord Ischemia (SCI), Cerebrospinal Fluid (CSF) Drainage and Blood Pressure (BP) Augmentation. *Surgical Science* 2017;8:73-81.
11. Zhang Z, Zhou Y, Lin S, et al. Systematic review and meta-analysis of association of prophylactic cerebrospinal fluid drainage in preventing spinal cord ischemia after thoracic endovascular aortic repair. *J Vasc Surg* 2022;75:1478-1489.e5.
12. Song S, Song SW, Kim TH, et al. Effects of preemptive cerebrospinal fluid drainage on spinal cord protection during thoracic endovascular aortic repair. *J Thorac Dis* 2017;9:2404-12.
13. Suarez-Pierre A, Zhou X, Gonzalez JE, et al. Association of preoperative spinal drain placement with spinal cord ischemia among patients undergoing thoracic and thoracoabdominal endovascular aortic repair. *J Vasc Surg* 2019;70:393-403.
14. Wong CS, Healy D, Canning C, et al. A systematic review of spinal cord injury and cerebrospinal fluid drainage after thoracic aortic endografting. *J Vasc Surg* 2012;56:1438-47.
15. Seike Y, Fukuda T, Yokawa K, et al. Aggressive use of prophylactic cerebrospinal fluid drainage to prevent spinal cord ischemia during thoracic endovascular aortic repair is not supportive. *Eur J Cardiothorac Surg* 2022;62:ezac441.
16. Aucoin VJ, Bolaji B, Novak Z, et al. Trends in the use of cerebrospinal drains and outcomes related to spinal cord ischemia after thoracic endovascular aortic repair and complex endovascular aortic repair in the Vascular Quality Initiative database. *J Vasc Surg* 2021;74:1067-78.
17. Kärkkäinen JM, Cirillo-Penn NC, Sen I, et al. Cerebrospinal fluid drainage complications during first stage and completion fenestrated-branched endovascular aortic repair. *J Vasc Surg* 2020;71:1109-1118.e2.
18. Bisdas T, Panuccio G, Sugimoto M, et al. Risk factors for spinal cord ischemia after endovascular repair of thoracoabdominal aortic aneurysms. *J Vasc Surg* 2015;61:1408-16.
19. Juszczak MT, Murray A, Koutsoumpelis A, et al. Elective Fenestrated and Branched Endovascular Thoracoabdominal Aortic Repair with Supraceliac Sealing Zones and without Prophylactic Cerebrospinal Fluid Drainage: Early and Medium-term Outcomes. *Eur J Vasc Endovasc Surg* 2019;57:639-48.
20. Kemp C, Ikeno Y, Aftab M, et al. Cerebrospinal fluid drainage in thoracic endovascular aortic repair: mandatory access but tailored placement. *Ann Cardiothorac Surg* 2022;11:53-5.
21. Page MJ, McKenzie JE, Bossuyt PM, et al. The PRISMA 2020 statement: an updated guideline for reporting systematic reviews. *BMJ* 2021;372:n71.
22. IHE. Quality Appraisal of Case Series Checklist 2014. Available online: <https://www.ihe.ca/publications/ihe-quality-appraisal-checklist-for-case-series-studies>
23. Wallace BC, Dahabreh IJ, Trikalinos TA, et al. Closing the Gap between Methodologists and End-Users: R as a Computational Back-End. *Journal of Statistical Software* 2012;49:1-15.
24. McGrath S, Zhao X, Steele R, et al. Estimating the sample mean and standard deviation from commonly reported quantiles in meta-analysis. *Stat Methods Med Res* 2020;29:2520-37.
25. Collaboration C. Review Manager. 5.4 ed, 2020. Available online: <https://training.cochrane.org/online-learning/core-software/revman>
26. Acher C, Acher CW, Marks E, et al. Intraoperative neuroprotective interventions prevent spinal cord ischemia and injury in thoracic endovascular aortic repair. *J Vasc Surg* 2016;63:1458-65.
27. Adams JD, Angle JF, Matsumoto AH, et al. Endovascular repair of the thoracic aorta in the post-FDA approval era. *J Thorac Cardiovasc Surg* 2009;137:117-23.
28. Addas JAK, Mafeld S, Mahmood DN, et al. Minimally Invasive Segmental Artery Coil Embolization (MISACE) Prior to Endovascular Thoracoabdominal Aortic Aneurysm Repair. *Cardiovasc Intervent Radiol* 2022;45:1462-9.
29. Angiletta D, Piffaretti G, Patruno I, et al. Preliminary results from a multicenter Italian registry on the use of a new branched device for the treatment of thoracoabdominal aortic aneurysms. *J Vasc Surg*

- 2021;74:404-13.
30. Arnaoutakis DJ, Arnaoutakis GJ, Beaulieu RJ, et al. Results of adjunctive spinal drainage and/or left subclavian artery bypass in thoracic endovascular aortic repair. *Ann Vasc Surg* 2014;28:65-73.
 31. Banno H, Kawai Y, Sato T, et al. Low-density vulnerable thrombus/plaque volume on preoperative computed tomography predicts for spinal cord ischemia after endovascular repair for thoracic aortic aneurysm. *J Vasc Surg* 2021;73:1557-1565.e1.
 32. Bobadilla JL, Wynn M, Tefera G, et al. Low incidence of paraplegia after thoracic endovascular aneurysm repair with proactive spinal cord protective protocols. *J Vasc Surg* 2013;57:1537-42.
 33. Chaudhary O, Sharkey A, Schermerhorn M, et al. Protocolized Based Management of Cerebrospinal Fluid Drains in Thoracic Endovascular Aortic Aneurysm Repair Procedures. *Ann Vasc Surg* 2021;72:409-18.
 34. Cheung AT, Pochettino A, McGarvey ML, et al. Strategies to manage paraplegia risk after endovascular stent repair of descending thoracic aortic aneurysms. *Ann Thorac Surg* 2005;80:1280-8; discussion 1288-9.
 35. Chuter TA, Rapp JH, Hiramoto JS, et al. Endovascular treatment of thoracoabdominal aortic aneurysms. *J Vasc Surg* 2008;47:6-16.
 36. D'Oria M, Chiarandini S, Pipitone M, et al. Coverage of visible intercostal and lumbar segmental arteries can predict the volume of cerebrospinal fluid drainage in elective endovascular repair of descending thoracic and thoracoabdominal aortic disease: a pilot study. *Eur J Cardiothorac Surg* 2019;55:646-52.
 37. D'Souza S, Duncan A, Aguila F, et al. TEVAR for non-aneurysmal thoracic aortic pathology. *Catheter Cardiovasc Interv* 2009;74:783-6.
 38. Desart K, Scali ST, Feezor RJ, et al. Fate of patients with spinal cord ischemia complicating thoracic endovascular aortic repair. *J Vasc Surg* 2013;58:635-42.e2.
 39. Fossaceca R, Guzzardi G, Cerini P, et al. Endovascular treatment of thoracic aortic aneurysm: a single-center experience. *Ann Vasc Surg* 2013;27:1020-8.
 40. Hiraoka T, Komiya T, Tsuneyoshi H, et al. Risk factors for spinal cord ischaemia after thoracic endovascular aortic repair. *Interact Cardiovasc Thorac Surg* 2018;27:54-9.
 41. Hnath JC, Mehta M, Taggart JB, et al. Strategies to improve spinal cord ischemia in endovascular thoracic aortic repair: Outcomes of a prospective cerebrospinal fluid drainage protocol. *J Vasc Surg* 2008;48:836-40.
 42. Iafrancesco M, Ranasinghe AM, Claridge MW, et al. Current results of endovascular repair of thoracoabdominal aneurysms. *Eur J Cardiothorac Surg* 2014;46:981-4.
 43. Iyer VS, Mackenzie KS, Tse LW, et al. Early outcomes after elective and emergent endovascular repair of the thoracic aorta. *J Vasc Surg* 2006;43:677-83.
 44. Kato M, Motoki M, Isaji T, et al. Spinal cord injury after endovascular treatment for thoracoabdominal aneurysm or dissection. *Eur J Cardiothorac Surg* 2015;48:571-7.
 45. Khojnehzad A, Azizzadeh A, Donayre CE, et al. Results of a multicenter, prospective trial of thoracic endovascular aortic repair for blunt thoracic aortic injury (RESCUE trial). *J Vasc Surg* 2013;57:899-905.e1.
 46. Kitpanit N, Ellozy SH, Connolly PH, et al. Risk factors for spinal cord injury and complications of cerebrospinal fluid drainage in patients undergoing fenestrated and branched endovascular aneurysm repair. *J Vasc Surg* 2021;73:399-409.e1.
 47. Kotelis D, Bianchini C, Kovacs B, et al. Early experience with automatic pressure-controlled cerebrospinal fluid drainage during thoracic endovascular aortic repair. *J Endovasc Ther* 2015;22:368-72.
 48. Maier S, Shcherbakova M, Beyersdorf F, et al. Benefits and Risks of Prophylactic Cerebrospinal Fluid Catheter and Evoked Potential Monitoring in Symptomatic Spinal Cord Ischemia Low-Risk Thoracic Endovascular Aortic Repair. *Thorac Cardiovasc Surg* 2019;67:379-84.
 49. Maurel B, Delclaux N, Sobocinski J, et al. The impact of early pelvic and lower limb reperfusion and attentive peri-operative management on the incidence of spinal cord ischemia during thoracoabdominal aortic aneurysm endovascular repair. *Eur J Vasc Endovasc Surg* 2015;49:248-54.
 50. Mazzeffi M, Abuelkasem E, Drucker CB, et al. Contemporary Single-Center Experience With Prophylactic Cerebrospinal Fluid Drainage for Thoracic Endovascular Aortic Repair in Patients at High Risk for Ischemic Spinal Cord Injury. *J Cardiothorac Vasc Anesth* 2018;32:883-9.
 51. Nathan DP, Shalhub S, Tang GL, et al. Outcomes after stent graft therapy for dissection-related aneurysmal degeneration in the descending thoracic aorta. *J Vasc Surg* 2015;61:1200-6.
 52. Pasqualucci A, Al-Sibaie A, Vaidyan KPT, et al. Epidural Corticosteroids, Lumbar Spinal Drainage, and Selective Hemodynamic Control for the Prevention of Spinal Cord Ischemia in Thoracoabdominal Endovascular Aortic Repair: A New Clinical Protocol. *Adv Ther*

- 2020;37:272-87.
53. Preventza O, Wheatley GH 3rd, Williams J, et al. Identifying paraplegia risk associated with thoracic endografting. *Asian Cardiovasc Thorac Ann* 2009;17:568-72.
 54. Rizk MAEMAES, Ismail MIM, Gohar KS. Stroke, spinal cord ischemia and upper limb ischemia in patients undergoing TEVAR with coverage of the left subclavian artery: a case series study. *Egypt J Radiol Nucl Med* 2021;52:276.
 55. Schurink GW, Nijenhuis RJ, Backes WH, et al. Assessment of spinal cord circulation and function in endovascular treatment of thoracic aortic aneurysms. *Ann Thorac Surg* 2007;83:S877-81; discussion S890-2.
 56. Sugiyama Y, Fuseya S, Aiba K, et al. Preoperative and postoperative complications of cerebrospinal fluid drainage in descending thoracic and thoraco-abdominal aortic aneurysm surgery: a single-center retrospective study. *J Anesth* 2022;36:476-83.
 57. Sulzinski MC, Rossi MJ, Alfawaz AA, et al. Optimization of factors for the prevention of spinal cord ischemia in thoracic endovascular aortic repair. *Vascular* 2022;30:199-205.
 58. Verma M, Ojha V, Deshpande AA, et al. Association between aortic coverage and spinal cord ischemia after endovascular repair of type B aortic dissection. *Indian J Thorac Cardiovasc Surg* 2022;38:375-81.
 59. Verzini F, Ferrer C, Parlani G, et al. Mid-Term Outcomes of Complex Endografting for Chronic Post-Dissection Thoracoabdominal Aortic Aneurysms. *Cardiovasc Intervent Radiol* 2020;43:1440-8.
 60. Yang GK, Misskey J, Arsenaault K, et al. Outcomes of a Spinal Drain and Intraoperative Neurophysiologic Monitoring Protocol in Thoracic Endovascular Aortic Repair. *Ann Vasc Surg* 2019;61:124-33.
 61. Zipfel B, Buz S, Redlin M, et al. Spinal cord ischemia after thoracic stent-grafting: causes apart from intercostal artery coverage. *Ann Thorac Surg* 2013;96:31-8.
 62. Coselli JS, LeMaire SA, Köksoy C, et al. Cerebrospinal fluid drainage reduces paraplegia after thoracoabdominal aortic aneurysm repair: results of a randomized clinical trial. *J Vasc Surg* 2002;35:631-9.
 63. Cinà CS, Abouzahr L, Arena GO, et al. Cerebrospinal fluid drainage to prevent paraplegia during thoracic and thoracoabdominal aortic aneurysm surgery: a systematic review and meta-analysis. *J Vasc Surg* 2004;40:36-44.
 64. Wynn MM, Sebranek J, Marks E, et al. Complications of spinal fluid drainage in thoracic and thoracoabdominal aortic aneurysm surgery in 724 patients treated from 1987 to 2013. *J Cardiothorac Vasc Anesth* 2015;29:342-50.
 65. Estrera AL, Sheinbaum R, Miller CC, et al. Cerebrospinal fluid drainage during thoracic aortic repair: safety and current management. *Ann Thorac Surg* 2009;88:9-15; discussion 15.
 66. Dardik A, Perler BA, Roseborough GS, et al. Subdural hematoma after thoracoabdominal aortic aneurysm repair: an underreported complication of spinal fluid drainage? *J Vasc Surg* 2002;36:47-50.
 67. Rong LQ, Kamel MK, Rahouma M, et al. Cerebrospinal-fluid drain-related complications in patients undergoing open and endovascular repairs of thoracic and thoraco-abdominal aortic pathologies: a systematic review and meta-analysis. *Br J Anaesth* 2018;120:904-13.
 68. Spanos K, Kölbl T, Kubitz JC, et al. Risk of spinal cord ischemia after fenestrated or branched endovascular repair of complex aortic aneurysms. *J Vasc Surg* 2019;69:357-66.
 69. Katsargyris A, Oikonomou K, Kouvelos G, et al. Spinal cord ischemia after endovascular repair of thoracoabdominal aortic aneurysms with fenestrated and branched stent grafts. *J Vasc Surg* 2015;62:1450-6.

Cite this article as: Chen CJ, Jiang H, Nguyen VDD. Prophylactic cerebrospinal fluid drainage and spinal cord ischemia in thoracic and thoracoabdominal endovascular procedures: a systematic review and meta-analysis. *Ann Cardiothorac Surg* 2023;12(5):392-408. doi: 10.21037/acs-2023-scp-17

Table S1 Procedural characteristics and neuroprotective measures

First author, publication year	Procedures studied	Diseases studied	Urgencies studied	Neuroprotective measures reported*
Acher (26), 2016	Standard TEVAR	Multiple	Multiple	Preoperative LSA revascularization Intraoperative MAP, Hb and SpO ₂ maintenance
Adams (27), 2019	Standard TEVAR	Multiple	Multiple	Preoperative LSA revascularization
Addas (28), 2022	Standard TEVAR F/BEVAR	Thoracoabdominal aortic aneurysm	Elective	Preoperative MISACE procedure
Angiletta (29), 2021	F/BEVAR	Thoracoabdominal aortic aneurysm	Multiple	Preoperative LSA revascularisation Intraoperative MAP and Hb maintenance
Arnautakis (30), 2014	Standard TEVAR	Multiple	Multiple	Preoperative LSA revascularisation
Banno (31), 2021	Standard TEVAR	Thoracic aortic aneurysm	Multiple	Intraoperative MAP maintenance
Bisdas (18), 2015	F/BEVAR	Thoracic aortic aneurysm	Elective	Intraoperative MAP and APTT maintenance
Bobadilla (32), 2013	Standard TEVAR	Multiple	Multiple	Preoperative LSA revascularisation Intraoperative MAP and hypothermia maintenance
Chaudhary (33), 2021	Standard TEVAR	Multiple	Multiple	Intraoperative MAP and SCPP maintenance Intraoperative SSEP or MEP monitoring
Cheung (34), 2005	Standard TEVAR	Thoracic aortic aneurysm	Multiple	Intraoperative MAP maintenance Intraoperative SSEP or MEP monitoring
Chuter (35), 2008	BEVAR	Thoracoabdominal aortic aneurysm	Multiple	Intraoperative MAP maintenance
D'Oria (36), 2019	Standard TEVAR FEVAR	Multiple	Elective	Preoperative LSA revascularisation Intraoperative MAP maintenance
D'Souza (37), 2009	Standard TEVAR	Penetrating aortic ulcer Intramedullary hematoma	Urgent or Emergent	Preoperative LSA revascularisation Intraoperative APTT maintenance
Desart (38), 2013	Standard TEVAR	Multiple	Multiple	Preoperative LSA revascularisation Intraoperative MAP, Hb, SpO ₂ , APTT, and CI maintenance
Fossaceca (39), 2013	Standard TEVAR	Thoracic aortic aneurysm	Multiple	Preoperative LSA revascularisation
Hiraoka (40), 2018	Standard TEVAR	Multiple	Multiple	Preoperative LSA revascularisation
Hnath (41), 2008	Standard TEVAR	Multiple	Multiple	Preoperative LSA revascularisation Intraoperative MAP maintenance
Iafrancesco (42), 2014	F/BEVAR	Thoracoabdominal aortic aneurysm	Multiple	Intraoperative MAP maintenance
Iyer (43), 2006	Standard TEVAR	Multiple	Multiple	Preoperative LSA revascularisation
Juszczak (19), 2019	Standard TEVAR F/BEVAR	Multiple	Elective	Preoperative LSA revascularisation Intraoperative MAP, Hb, SpO ₂ maintenance
Kato (44), 2015	Standard TEVAR F/BEVAR	Thoracoabdominal aortic dissection	Emergent	None reported
Khoynezhad (45), 2013	Standard TEVAR	Blunt aortic injury	Emergent	Preoperative LSA revascularisation Intraoperative APTT maintenance
Kitpanit (46), 2021	F/BEVAR	Thoracoabdominal aortic aneurysm	Multiple	Preoperative LSA revascularisation Intraoperative MAP, Hb, APTT maintenance Intraoperative near infrared spectroscopy monitoring
Kotelis (47), 2015	Standard TEVAR	Multiple	Multiple	Preoperative LSA revascularisation Intraoperative MAP and APTT maintenance
Maier (48), 2019	Standard TEVAR	Multiple	Multiple	Preoperative LSA revascularisation Intraoperative MAP maintenance Intraoperative SSEP or MEP monitoring
Maurel (49), 2015	F/BEVAR	Thoracoabdominal aortic aneurysm	Elective or Urgent	Preoperative LSA revascularisation Intraoperative MAP, Hb, SpO ₂ and APTT maintenance
Mazzeffi (50), 2018	Standard TEVAR	Multiple	Multiple	Intraoperative MAP and APTT maintenance Intraoperative SSEP or MEP monitoring
Nathan (51), 2015	Standard TEVAR F/BEVAR	Dissection related aneurysmal disease	Multiple	Preoperative LSA revascularisation
Pasqualucci (52), 2020	Standard TEVAR	Thoracic aortic aneurysm	Multiple	Intraoperative MAP, Hb, and SpO ₂ maintenance
Preventza (53), 2009	Standard TEVAR	Multiple	Multiple	Preoperative LSA revascularisation Intraoperative MAP and APTT maintenance
Rizk (54), 2021	Standard TEVAR	Multiple	Elective	None reported
Schurink (55), 2007	Standard TEVAR	Multiple	Multiple	Intraoperative SSEP or MEP monitoring
Seike (15), 2022	Standard TEVAR	Thoracic aortic aneurysm	Elective	Intraoperative MAP maintenance Intraoperative SSEP or MEP monitoring
Song (12), 2017	Standard TEVAR	Multiple	Multiple	Preoperative LSA revascularisation
Sugiyama (56), 2022	Standard TEVAR	Multiple	Elective	Intraoperative SSEP or MEP monitoring
Sulzinski (57), 2022	Standard TEVAR	Multiple	Elective	Preoperative LSA revascularisation Intraoperative MAP and Hb maintenance Intraoperative SSEP or MEP monitoring
Verma (58), 2022	Standard TEVAR	Type B Aortic Dissection	Multiple	Preoperative LSA revascularisation Intraoperative MAP maintenance
Verzini (59), 2020	Standard TEVAR F/BEVAR	Dissection related aneurysmal disease	Multiple	Preoperative LSA revascularisation Intraoperative MAP and Hb maintenance
Yang (60), 2019	Standard TEVAR	Multiple	Multiple	Preoperative LSA revascularisation Intraoperative MAP and Hb maintenance Intraoperative SSEP or MEP monitoring
Zipfel (61), 2013	Standard TEVAR F/BEVAR	Multiple	Multiple	Preoperative LSA revascularisation

*, neuroprotective measures not including cerebrospinal fluid drainage. Reporting rates – LSA revascularization (27), MAP (26), Hb (10), APTT (9), SSEP or MEP (9), SpO₂ (5). TEVAR, Thoracic endovascular aortic repair; FEVAR, Fenestrated endovascular aortic repair; BEVAR, Branched endovascular aortic repair; F/BEVAR, Fenestrated/Branched endovascular aortic repair; Somatosensory evoked potentials; MEP, motor evoked potentials; MAP, mean arterial pressure; Hb, hemoglobin; SpO₂, oxygen saturation; APTT, activated partial thromboplastin time; LSA, left subclavian artery; MISACE, minimally invasive segmental artery coil embolization; SCPP, spinal cord perfusion pressure; CI, cardiac index.

Table S2 CSFD protocol		
First author, publication year	Routine or selective	CSFD indications
Acher (26), 2016	Selective	Aortic coverage >12cm
Adams (27), 2019	Selective	Any of the following: 1. Aortic coverage >20cm 2. Coverage of distal descending aorta 3. Prior aortic surgery
Addas (28), 2022	Routine	Routine
Angiletta (29), 2021	Routine	Routine
Arnaoutakis (30), 2014	Selective	As deemed by operating surgeon
Banno (31), 2021	Selective	Aortic coverage >20cm (cases 2008-2012)
Bisdas (18), 2015	Selective	Pre-2013: As deemed by operating surgeon Post-2013: No CSFD in TEVAR protocol
Bobadilla (32), 2013	Routine	Routine
Chaudhary (33), 2021	Selective	Any of the following: 1. >20 cm aortic coverage 2. Coverage of lower 1/3 of aorta 3. Pararenal or Type IV TAAA with planned coverage of >5cm above coeliac artery 4. Prior aortic repair 5. Occlusion of subclavian or internal iliac arteries
Cheung (34), 2005	Selective	As deemed by operating surgeon
Chuter (35), 2008	Routine	Routine
D'Oria (36), 2019	Routine	Routine
D'Souza (37), 2009	Selective	As deemed by operating surgeon
Desart (38), 2013	Selective	As deemed by operating surgeon
Fossaceca (39), 2013	Routine	Routine
Hiraoka (40), 2018	Selective	As deemed by operating surgeon
Hnath (41), 2008	Routine	Routine
Iafrancesco (42), 2014	Routine	Routine
Iyer (43), 2006	Routine	Routine
Juszczak (19), 2019	Selective	Pre-2012: >40mm supraceliac coverage Post-2012: No CSFD in TEVAR protocol
Kato (44), 2015	Selective	As deemed by operating surgeon
Khoynezhad (45), 2013	Selective	As deemed by operating surgeon
Kitpanit (46), 2021	Selective	Any of the following: 1. TAAA Crawford I-III 2. Prior aortic surgery or TEVAR
Kotelis (47), 2015	Routine	Routine
Maier (48), 2019	Routine	Routine
Maurel (49), 2015	Selective	Pre 2010: Not reported Post 2010: All TAAA Crawford I-III
Mazzeffi (50), 2018	Selective	Any of the following: 1. >15cm aortic coverage 2. Prior TEVAR or EVAR 3. Poor pelvic perfusion 4. Occluded abdominal aorta
Nathan (51), 2015	Selective	DNR or "high risk" as deemed by operating surgeon
Pasqualucci (52), 2020	Routine	Routine
Preventza (53), 2009	Selective	Any of the following: 1. Prior aortic surgery 2. >20cm aortic coverage
Rizk (54), 2021	Routine	Routine
Schurink (55), 2007	Routine	Routine
Seike (15), 2022	Selective	Any of the following: 1. Aortic coverage of intercostal arteries branching from AKA 2. Aortic coverage of >8 vertebrae 3. Prior aortic repair 4. Shaggy aorta
Song (12), 2017	Selective	Any of the following: 1. Aortic coverage of LSA 2. Aortic coverage >30cm 3. Prior aortic repair 4. Aortic coverage of intercostal arteries 5. Aortic coverage of important vertebral, pelvic, and hypogastric arteries 6. Shaggy aorta
Sugiyama (56), 2022	Routine	Routine
Sulzinski (57), 2022	Routine	Routine
Verma (58), 2022	Selective	Hypoplastic or atretic right vertebral artery
Verzini (59), 2020	Routine	Routine
Yang (60), 2019	Selective	Any of the following: 1. Aortic coverage >20cm 2. Prior aortic surgery 3. Bilateral internal iliac artery coverage
Zipfel (61), 2013	Selective	Aortic coverage >20cm

Most commonly reported CSFD drainage duration per protocol was 48-72 hours (range from 6 hours to 120 hours). Mean CSFD was 222 mL (range 46-714 mL). The most commonly reported CSFD target intraoperatively was <10 mmHg (Garrido, Iafrancesco, Kotelis, Mazzeffi, Pasqualucci, Song, Verma, Yang), followed by <15 mmHg (Arnaoutakis, Chaudhary, Hnath, Rizk, Seike, Sulzinski), then by <12 mmHg (Cheung, D'Oria, Preventza, Sugiyama, Verzini), then by <8 mmHg (Acher, Bobadilla), and by <7.3 mmHg (Kato, Maurel), and <8.8 mmHg (Kitpanit). CSFD, cerebrospinal fluid drainage; TAAA, thoracoabdominal aortic aneurysm; TEVAR, thoracic endovascular aortic repair; EVAR, endovascular aortic repair; LSA, left subclavian artery; AKA, Artery of Adamkiewicz.

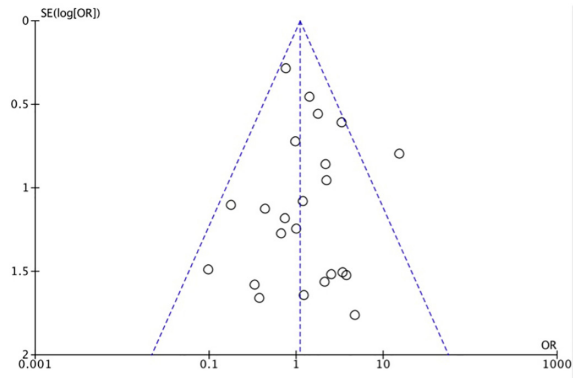


Figure S1 Funnel plot for any SCI in CSFD *vs.* non-CSFD patients.

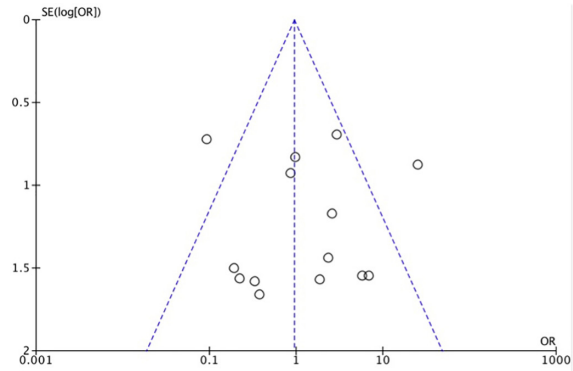


Figure S2 Funnel plot for permanent SCI in CSFD *vs.* non-CSFD patients.

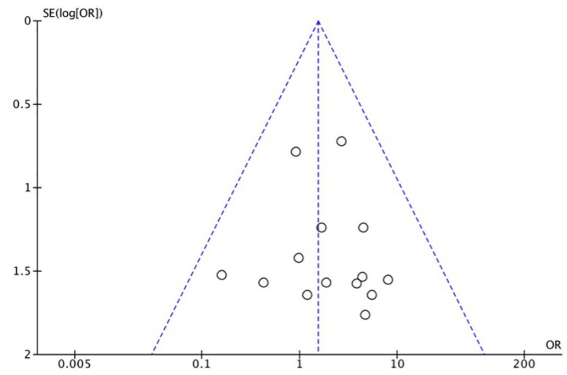


Figure S3 Funnel plot for transient SCI in CSFD *vs.* non-CSFD patients.